

The Non-Tenure-Track Academic Workforce

Myths, Facts, Resources

© 2015 by The Modern Language Association of America
All rights reserved.

Rosemary G. Feal
Execdirector@mla.org

Data sources:

The US Department of Education Fall Staff Survey (1995, 2003, and 2011)

The 2004 National Study of Postsecondary Faculty

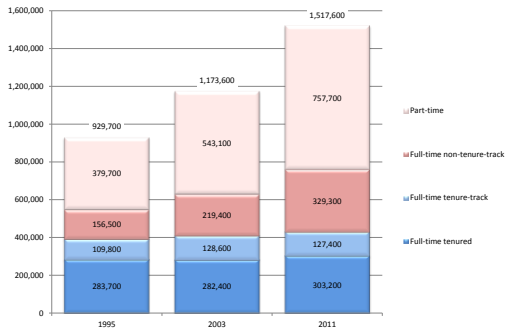
Myth #1

Most professors in colleges and universities in the United States are in tenured or tenure-track positions.



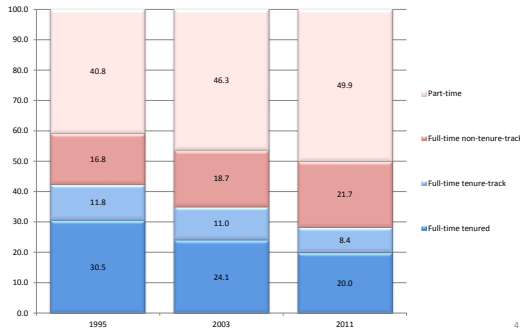
2

Number of Faculty Members, by Tenure Status and Employment Status, 1995, 2003, 2011

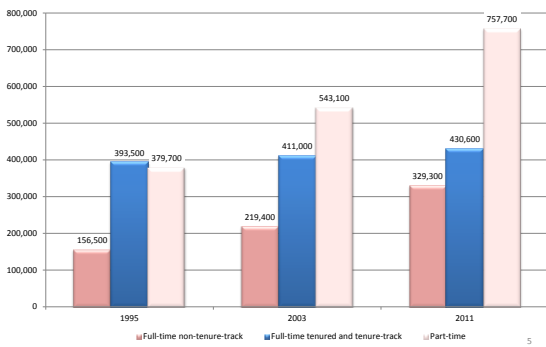


3

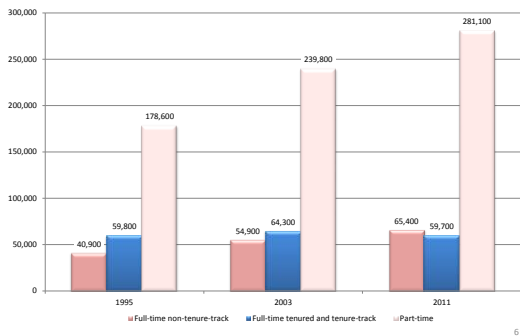
Percentage of Faculty Members, by Tenure Status and Employment Status, 1995, 2003, 2011



Number of Faculty Members in Full-Time Non-Tenure-Track Positions, Full-Time Tenured and Tenure-Track Positions, and Part-Time Positions, 1995, 2003, 2011



Number of Faculty Members in Full-Time Non-Tenure-Track Positions, Full-Time Tenured and Tenure-Track Positions, and Part-Time Positions, 1995, 2003, 2011 Two-Year Institutions



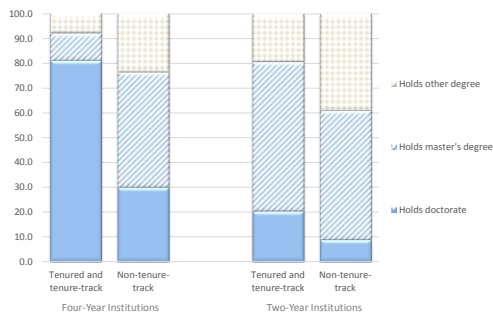
Myth #2

Academic institutions generally provide students with professors who hold the highest degrees in their fields.



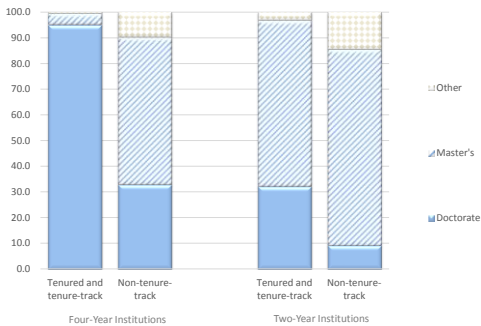
7

Highest Degree Held by Faculty Members Teaching on and off the Tenure-Track, by Type of Institution
All Fields of Study



8

Highest Degree Held by Humanities Faculty Members Teaching on and off the Tenure-Track, by Type of Institution



9

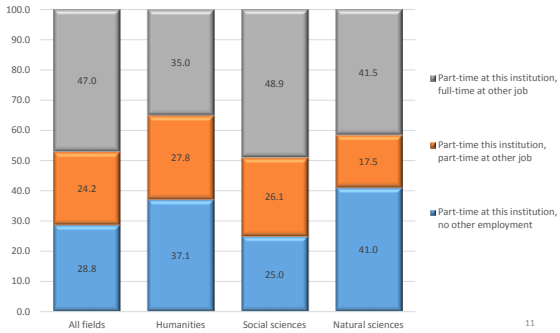
Myth #3

Most part-time faculty members are either recent PhD recipients searching for permanent positions, graduate students gaining experience while they complete their degrees, or professionals with jobs outside of academia bringing their practical experience to the students in the courses they teach.



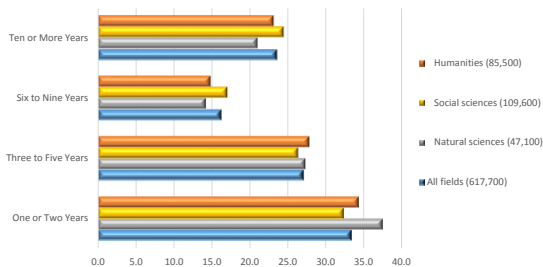
10

Part-Time Faculty Members with and without Other Part- or Full-Time Employment, by Discipline



11

Years Non-Tenure-Track Faculty Members Have Held their Current Job, by Discipline



12

Resources

Use the reports and materials collected in the MLA Academic Workforce Advocacy Kit
www.mla.org/advocacy_kit

Consult the institution-level information available at the MLA Academic Workforce Data Center
www.mla.org/acad_work_search

Use the reports collected by the Coalition on the Academic Workforce
www.academicworkforce.org

13



Part-time faculty members can add to the institution-level information about salaries and working conditions by contributing to the Adjunct Project, hosted by the *Chronicle of Higher Education*.

14

The Delphi Project on the Changing Faculty and Student Success

Project Web site
www.thechangingfaculty.org

The Imperative for Change
imperative.thechangingfaculty.org

The Path to Change
path.thechangingfaculty.org/

Campus and departmental guides
guides.thechangingfaculty.org/

15